

WE BUILD YOUR DREAMS



GLOBAL INFINITY
CONTRACTING

ARCHITECTURE – INTERIORS – CONSTRUCTION

COMPANY PROFILE

www.global-infinity.com

Table of Contents

Part 01

Executive Summary

- 1.1- About GIC
- 1.2- CEO Message

Part 02

GIC Overview

- 2.1- Vision
- 2.2- Mission
- 2.3- Goals

Part 03

GIC Sectors

- 3.1- Civil & Construction Works
- 3.2- Electromechanical Works
- 3.3- Interiors & Exteriors Works
- 3.4- Aluminum Works
- 3.5- Facility Building Management
- 3.6- Trading (Building Materials)

Part 04

Projects & Experience

- 4.1- Staff Experience
- 4.2- Company Projects

Part 05

GIC Trading


- 5.1- Building Materials
- 5.2- Building Materials

Part 06

GIC Staff

- 6.1- Organization chart
- 6.2- Principle of Recruiting
- 6.3- Staff Management Message

1.1- ABOUT GIC



Global Infinity Contracting Co. W.L.L (GIC) Commenced Its Activities as a Contracting Company, Specialized in Construction Works with Turn-key Building Solutions, in Civil, Electromechanical, Interiors, Facility Management and Material Trading.

The Company's Position has Involved Over with an Increasing Number of Projects and an upward growing turnover. Through Client's Trust and WIN-WIN Business Relationship, GIC Aiming High to be the Preferred Technical Service Provider in Kuwait.

Moreover, we take the privilege of Bringing Successful International partners to Kuwait's Market. According to the Market Statistics and Demand.



Driven by passion to expand, GIC aiming to set new standards for building development and customer's service

MOHAMED FAROUK

CEO/Partner



GLOBAL INFINITY
CONTRACTING

GLOBAL INFINITY



2.1- Vision

Is to be the Leading Local Firm in the State of Kuwait in the field of Architectural, Construction, Electromechanical & Interiors
By Utilizing all of our Capabilities, we will Contribute to Kuwait's State vision of 2030, By adding value to Building Development Business.

2.2- Mission

Is to Deliver the Highest Quality of Various Building Construction Works, And The World's Newest & Finest Designs for Interior Works. Professional Team Who is Committed to Serve our Clients
Our Pledge is to Establish Lasting Relationships with our Customers, By Exceeding Their Expectations & Gaining Their Trust, Through Exceptional Performance by Every Member of the Team

2.3- Goals

GIC Goal is to be the Preferred Destination for B2B, B2C & B2G
GIC Second Goal is to be The Preferred Work Destination for Employees, By Encouraging the Diversification of Services and Expertise.
Third Goal is to Expand our Business to reach far edges of GCC and MENA Region, as per our long-term Business Plan of 2020.

GIC SPECIALIZE IN 6 CORES OF BUSINESS**Electro-Mechanical Sector**

- HVAC Works
- Firefighting Works
- Plumbing & Piping Works
- Electrical & Lighting Works

Interior & Exterior Sector

- Finishing Works (Walls-Floors-Ceiling)
- Façade Treatments (Terracotta, Stone)
- Windows, Doors & Accessories
- Fit-outs & Turn-key Projects

Trading (Building Materials)

- Supply Finishes Materials
- Hardware & Accessories Solutions
- Best Quality Resources
- Competitive Prices

3.1**Civil & Construction Sector**

- Concrete Works
- Block Works
- Operations Supervision & Preparations
- Maintain Safety & Quality Standards

3.2**3.3****Aluminum Sector**

- Aluminum Curtain Walls
- Aluminum Doors & Windows
- Aluminum Sky-lights
- Aluminum Composite Cladding

3.4**3.5****Building Facility Management**

- Civil Maintenance
- Electro-mechanical Maintenance
- Facilities Operations
- Complete FM Solutions

3.6

Part 4

4.1-Staff Experience

Injazat Tower



Kuwait Business Town Tower



High Rise Towers

Consultancy Supervisions

The Promenade Complex



KOTC Kuwait Oil Tanker Company



Shopping Malls

Consultancy Supervisions

Corporate Buildings

Consultancy Supervisions

OUR EXPERIENCE

Part 4

4.2.1-Company Projects

Design – Construction
Renovation

Medical Projects (Turn-key)

Complete Fit out ,Finishes &
Electromechanical works

Spa & Health Clubs –
Complete fit out & Finishes

AL- KHALEEJIA MALL RENOVATION



AL-Borg Medical Labs



Spa & Health Center



Part 4 4.2.2- From our Projects

(Boubyan Offices)



Office Fit out

Office Buildings(Shaya Tower)



Fit Out Finishes

Private Villas



Concrete Works & Skelton Works

GLOBAL INFINITY

Part 4 4.2.2- From our Projects

High-end clients are using GIC's latest designs of Fit-outs

Space utilization and self-satisfaction is our main asset of design and build.

Luxury that meets your expectations in private residential project.

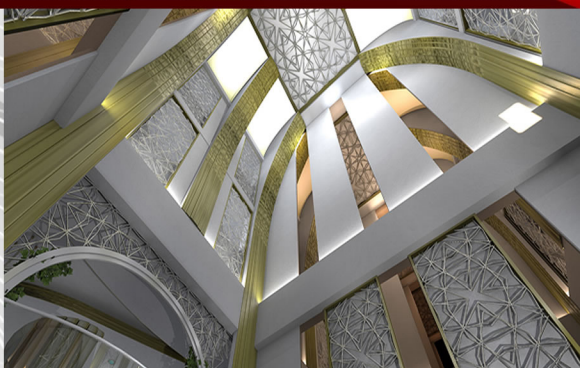
Residential Villas



Residential Villas

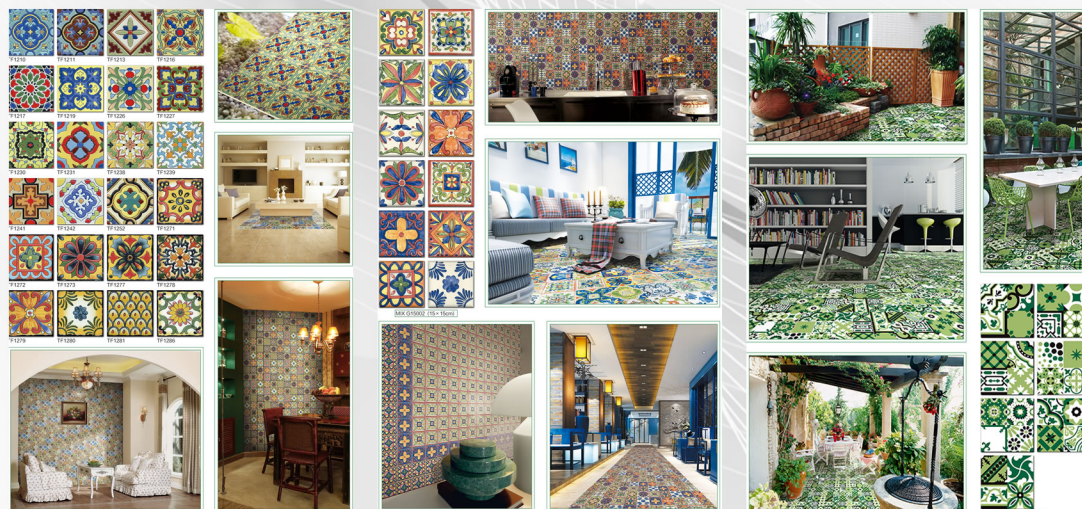
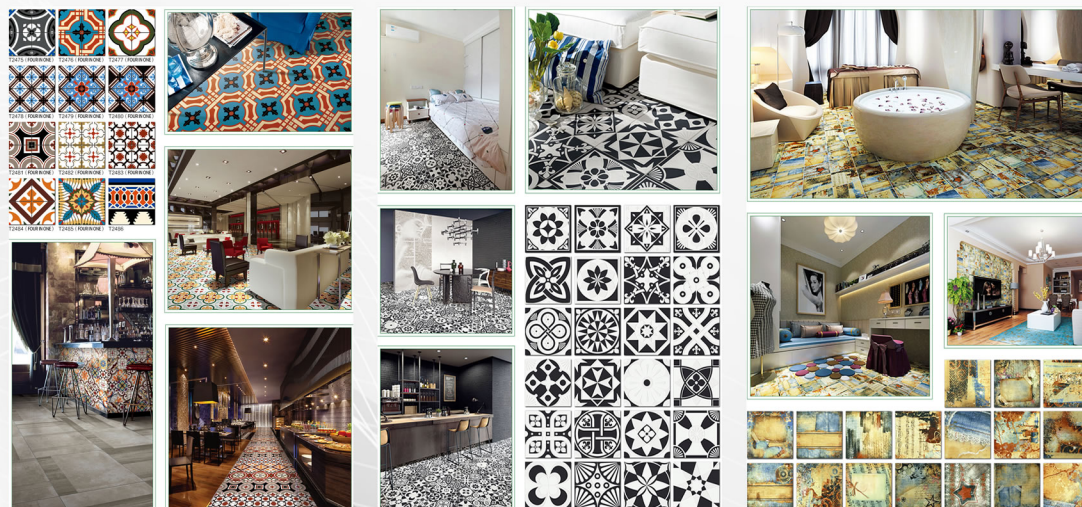
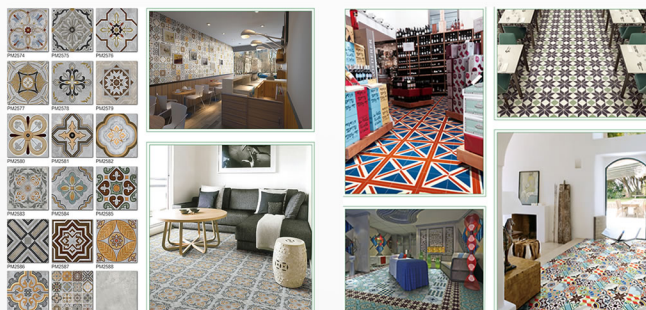


Residential Villas

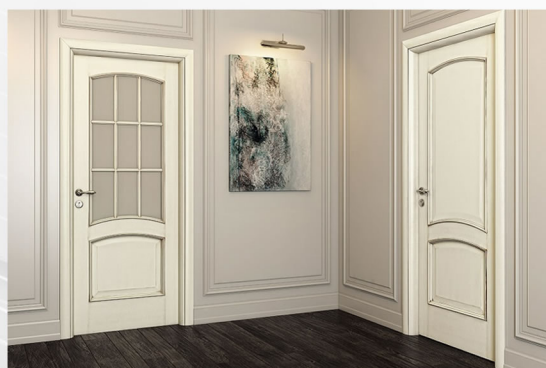
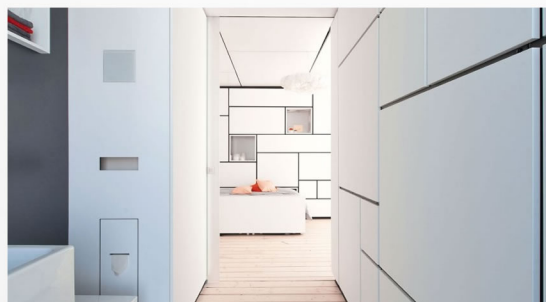
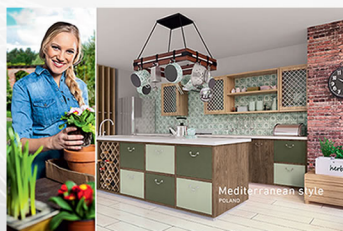


Part 5

5.1-Material Supply - Decorative Tiles

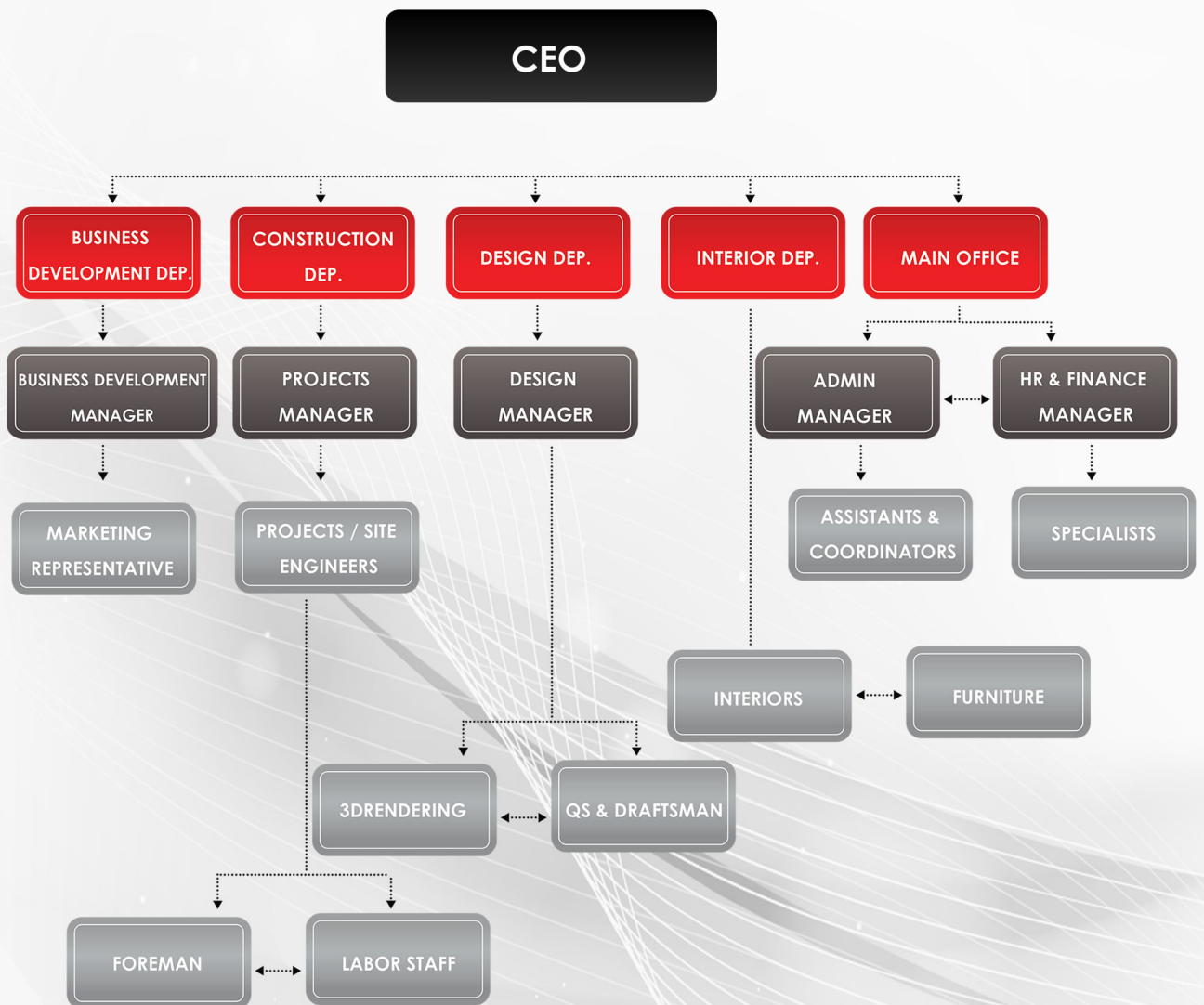


GLOBAL INFINITY



Part 6

6.1- Organization Chart



Global infinity Contracting Structure Divided into Five Main lines of Business as Follows:

Business Development (Sales – Marketing – Customer Relations)
Design Department (Civil – Architecture – Electromechanical – Interior & Exterior – 3D)
Construction Department (Projects Manager – Site Engineers – Supervisors)
Facility Management & Maintenance Department (Maintenance Engineers – Technicians)
Materials & Trading Department (Exclusive Collection of Ceramics – Tiles – Granit for Direct Sales)

Plus the Company Operations Staff: Finance, Legal and Human Resources.

Each Department has a Manager in charge and co- ordination staff for assistance.
The Hiring Process is 4 Stages, Starting from the Normal Evaluating Till The Operational & Technical Expertise.

All our staff have very high and well experience in the related business field with help of our valuable labors and technicians supported by financial resources and assets

Global Infinity is Driven by Passion of Expand, So we are Take Care of the Annual Training for our Technical Staff & Office Staff.

We have a Clear Business Strategy, Which Understand That The Human Resource is The Most Valuable Asset in The Whole Business Operation.



GLOBAL INFINITY
CONTRACTING

**staff messages
I'm global infinity**

Business Development Department.

Our Passion for Business Deals was Always the Driving Factor to Success, Being a Part of a Dynamic Organization like GIC; is a Privilege to Add Continues Value to our Costumer's Business.

We Take our client's Demands Very Seriously, Which Lead to Re-Generate Business from the Same.

Design Department.

The Most Important Part in Design is IMAGINATION, If You Lost it– You Lose Design Spirit.

GIC always Encouraging Work Environment, That Keeps our Designers in Enthusiastic Mode.

Projects Management.

The First Work Ethic we Learned in GIC, Is To Take Care of The Tiny Details. This is What Separate Professionals from Beginners.

Our Top Management Support is Essential Key to Feel Trustable, And Give The Ability to Make Critical Decisions When Needed.

Thank you

FOLLOW US:



Global Infinity Contracting



Global_Infinity_Co



@globalinfinity2015

CONTACT US:

Tel/Fax: +965 22456396
info@global-infinity.com

Kuwait – Sharq
Ahmed Al-Jaber St.
Dar Al-Salam Build.
Mezzanine Floor

B.O.Box-44958 Hawally
32046, Hawally - Kuwait



GLOBAL INFINITY
CONTRACTING

www.global-infinity.com